

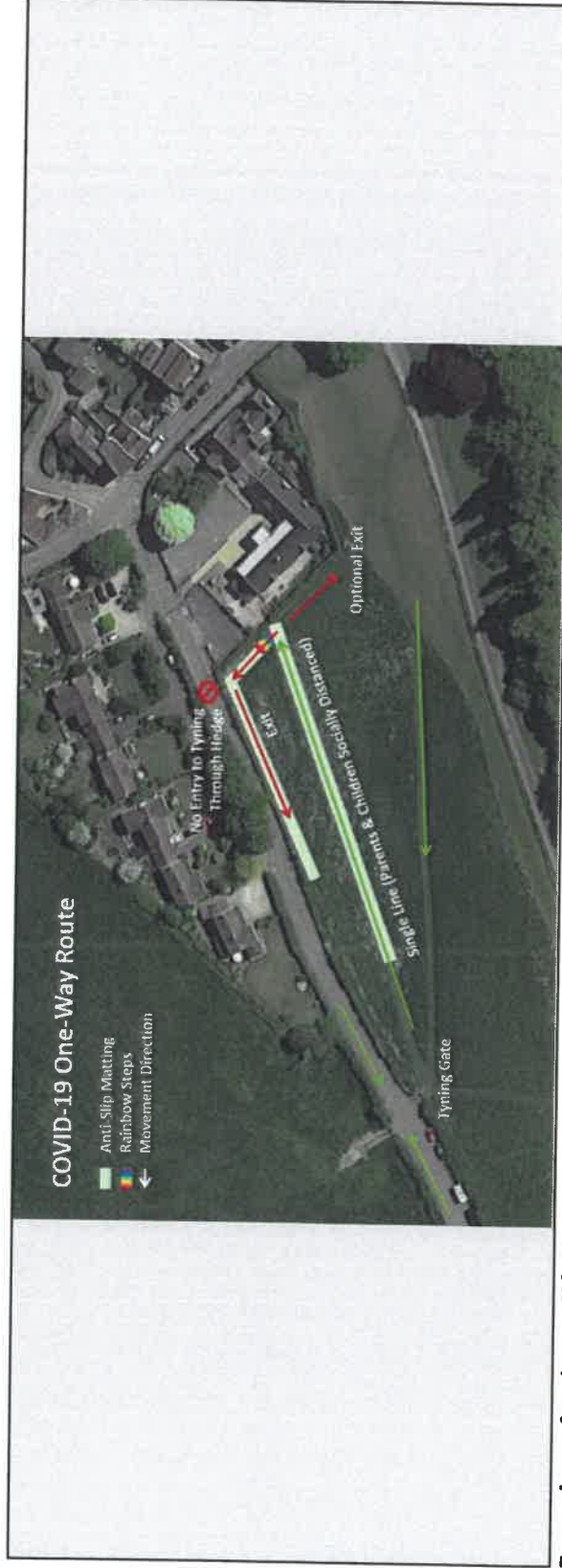
Information for Parents & Carers for September 6th, 2021

Our return to school

To begin our year at Freshford, we are sustaining the core routines, procedures and the continual vigilance that we believe to have helped to minimise infection across our community and maximise the amount of time that children have been able to spend in school through the pandemic to date, including staggered drop-offs and pick-ups. In doing so, we aim to maximise the chances of an uninterrupted start to the year for all our children, helping them to settle securely and happily into their classes and establishing healthy learning behaviours and attitudes with their teachers and TAs.

Drop Off and Pick Up

There will continue to be an extended drop off and pick up.
Please support us in maintaining the efficiency of this routine to help all our children to get off to the best possible start.



Procedures for drop off/pick up:

- **Siblings can be dropped at the same time** – at the youngest child's time & should queue with them. **At the end of the day, the youngest sibling will remain in school until the eldest sibling's class finishes school for the day.** Siblings should only come if it would not be safe to leave them at home.
- Parents and carers are asked to queue with their children along the grass matting path in the Tynning, beginning at the Tynning gate as indicated and progressing towards the school gate. At this point children enter the school grounds and adults are requested to leave directly by going down the rainbow steps and back along the lower matting path to the starting gate. Alternatively, parents may wish to leave by turning right and climbing up the Tynning.
- All families entering the queuing system are requested start at the point where the matting begins. The rainbow steps will be one-way down-hill only during drop off and pick up times.
- There are white plastic fence posts with ribbons to indicate the location of the path leading to the Tynning .
- All classroom and corridor doors will be wedged/hooked open throughout the day *(NB We make this decision prioritising good ventilation as a primary tool for inhibiting the spread of the virus in balance with the low additional fire risks presented in these contexts by this action).*
- **All children will wash their hands with soap and water on arrival.**
- At the end of the day, children will line up with their teacher &/or teaching assistant for prompt collection by their parents and carers, who we request to line up along the matting pathway, using the same one-way system used at drop-off.
- Currently we will allow Year 6 children to come to school unaccompanied. NB Children must arrive at the correct start time. If a child demonstrates that he or she is unable to do so they will need to be accompanied by an adult.
- An adult will come to the gate to greet the children before they are directed to wash their hands and make their way to the classroom.
- Registers and lunch registers will close within 15 minutes of a child's class drop-off time.
- If you are late **(and please we NEED you to be on time)** you will need to use the main entrance, buzz for entry. If this is at the same time for bus children arrival, please wait until they have all entered the school gate.

After School Clubs

School clubs will run as normal. Further information will follow when the new term commences.

Limiting Contact

- For details, please read the latest update of School's COVID-19 Risk Assessment – a copy will have been sent to you directly and the most recently updated version will be available on our website <https://www.freshfordschool.org.uk>
- George and Bythesea classes (EYFS/KS1) will work as one group and KS2 the same.
- Ashe, Mill & Joyce classes will work as separate groups when indoors but will share play/outdoor time where airborne transmission risks are lower than in the classroom.
- All children will share playtimes outdoors. Please ensure that your child comes to school wearing the appropriate clothing for the

predicted weather for any particular day so that they can enjoy a happy, healthy and fulfilling playtime outdoors at least twice a day.

Classroom Arrangements

- Children will be given a set of essential day to day resources in their own labelled tray or appropriate storage unit.
- These resources will not be shared or taken home.
- Hand sanitiser will be provided in every room by the principal entrances and the door to the toilets where different.
- Please ensure that EVERYTHING is named. Daily fruit/veg snack will be available for all children in KS1 and EYFS.

Lunch Arrangements

- Normal school lunch routines and meals made our school kitchen will be restored
- Note: we have been warned by the catering company that there may have to be some short notice changes in menus if the lorry driver shortage impacts on deliveries.
- Children not wishing to eat a school meal will need to bring in a packed lunch from home.
- Some classes will eat on the decking area to ensure that the hall is not unnecessarily crowded.

Face Coverings, Masks and PPE

- Face coverings are not advised for children but persons choosing to wear face coverings as a precaution will be supported.
- All visitors, including parents, will be requested to wear a face covering inside the school building if a 2 metre distance cannot be maintained.
- The school has purchased, for first aid and other essential PPE for close quarters work such as isolating a child who may have C-19 symptoms.
- As teachers at Freshford will be in contact with large numbers of children, we may choose to wear face masks as we understand it may help prevent spread of the virus from one group to another. We understand that it may not protect us personally, but may choose to do so as it may go some way to protecting your children and your families should we be the ones who have become infected.
- Disposable PPE is available for supporting children with intimate care
- When administering first aid at close quarters, gloves, apron and masks will be used.
- If a child or staff member becomes unwell with symptoms of coronavirus while in school and needs direct personal care until they can return home, they will be isolated with an adult, outside if weather permits, otherwise windows will be kept opened to ensure maximum ventilation. If contact with the child or adult is necessary, then disposable gloves, a disposable apron and a mask will be

worn by the supervising adult.

Hand Washing

Children will wash their hands regularly and at various points throughout the school day, including:

- ❖ arrival in school
- ❖ at the end of break
- ❖ before and after eating snacks and lunch
- ❖ at the beginning and at the end of lunch time
- ❖ after using the toilet
- ❖ after touching body parts including noses
- ❖ before going home

Uniform

- Children should wear a school uniform or PE hoodie, plus robust shoes or trainers.
- Since windows and doors will be kept open to provide essential ventilation, children are advised to wear appropriate layers of clothing beneath their school uniform to maintain comfort levels.
- Footwear should be school shoes. No sandals.

Parent and Carer meetings:

- Very brief face to face updates are best held at the gate at pick-up or drop off times.
- Meetings with carers and parents will be in the grounds before or after school. Your class teacher will highlight the best times and days for these at your child's or children's back-to school meeting.
- **Visitors on site will be informed of the requirements of the September 2021 risk assessment and expected to support them comprehensively.**

If Someone Becomes Unwell

If anyone in school develops COVID-19 symptoms:

- a high temperature
- a new, continuous cough
- a loss or change to your sense of smell or taste.

however mild, they will be sent home immediately and the family should follow public health advice.

The child will be isolated until they can be picked up and the family asked to arrange testing.

When should my child self-isolate or miss school?



- All children **MUST** attend school unless they are ill.
- From 16th August 2021, children under 18 (or double-vaccinated adults) do not need to self-isolate or miss school if a member of their household or a contact, has Covid.
- Instead, they will need to book a PCR test but can continue coming to school so long as they have no symptoms and the test result is negative.

NO



- If your child develops Covid symptoms at home, they should **stay at home** and should book a PCR test, **NOT** a Lateral Flow test.
- If your child develops Covid symptoms at school, they will be sent home and you should book them a PCR test.
- If your child tests positive for Covid, they will need to self-isolate. The rest of the household does not need to self-isolate if they are under 18 or fully vaccinated – but instead should book a PCR test.

YES

Testing, self-isolation and managing confirmed cases of COVID-19

What if someone tests positive or has symptoms? Do they need to isolate?

- ❖ Self-isolate straight away and get a PCR test (a test that is sent to the lab) on GOV.UK as soon as possible if you have any of these 3 symptoms of COVID-19, even if they are mild:
 - ❖ a high temperature
 - ❖ a new, continuous cough
 - ❖ a loss or change to your sense of smell or taste.
- ❖ If anyone in school develops COVID-19 symptoms, however mild, you should send them home and they should follow public health advice.

You should also self-isolate straight away if:

- ❖ you've tested positive for COVID-19 either according to a PCR test or a lateral flow device test – this means you have the virus. If you get a positive LFD test you should book a PCR test. A negative PCR test will override a positive LFD test.
- ❖ someone you live with has symptoms or tested positive (unless you are not required to self-isolate – see 'What will happen for people who have been in contact with positive cases?' below) · you've been told to self-isolate following contact with someone who tested positive – find out what to do if you're told to self-isolate by NHS Test and Trace or the NHS COVID-19 app.

Pupils should only self-isolate if they have symptoms or if they get a positive PCR or Lateral Flow Device (LFD) test.

- ❖ A positive PCR test cannot be overridden. If a pupil is asked to get a PCR test as a result of contact with a positive case they may continue to attend

education until they get the result of their PCR back.

When an individual develops COVID-19 symptoms or has a positive test

- ❖ Pupils, staff and other adults should follow public health advice on when to self-isolate and what to do. **They should not come into school if they have symptoms, have had a positive test result or other reasons requiring them to stay at home due to the risk of them passing on COVID-19 (for example, they are required to quarantine).**

What will happen for people who have been in contact with positive cases?

- ❖ Individuals are not required to self-isolate if they live in the same household as someone with COVID-19, or are a close contact of someone with COVID-19, and any of the following apply:
 - ❖ they are fully vaccinated
 - ❖ they are below the age of 18 years and 6 months
 - ❖ they have taken part in or are currently part of an approved COVID-19 vaccine trial
 - ❖ they are not able to get vaccinated for medical reasons
 - ❖ **Instead, they will be contacted by NHS Test and Trace**, informed they have been in close contact with a positive case and advised to take a PCR test. We would encourage all individuals to take a PCR test if advised to do so.
- ❖ Staff who do not need to isolate, and children and young people aged under 18 years 6 months who usually attend school, and have been identified as a close contact, **should continue to attend school as normal**. They do not need to wear a face covering within the school, but it is expected and recommended that these are worn when travelling on public or dedicated transport.
- ❖ If none of the above applies, people should self-isolate as per the instructions from NHS Test and Trace.

Confirmatory PCR tests

- ❖ **Staff and pupils with a positive LFD test result should self-isolate in line with the stay at home guidance for households with possible or confirmed coronavirus (COVID-19) infection.**
- ❖ **They will also need to get a free PCR test to check if they have COVID-19.**
- ❖ Whilst awaiting the PCR result, the individual should continue to self-isolate.
- ❖ If the PCR test is taken within 2 days of the positive lateral flow test, and is negative, it overrides the self-test LFD test and the pupil can return to school, as long as the individual doesn't have COVID-19 symptoms.

This guidance will be changed as soon as we are made aware that changes to guidance have been published by the government, PHESW or the local authority.